

Garant **Water pump pliers with box joint**



Box joint (= double guides). Designed to prevent fingers being trapped. Push-button **fine step adjustment**. Concave profile serrated jaws, self-clamping. Surface manganese phosphated, polished jaws. Ergonomically shaped handles with non-slip plastic coating.

Standard: ISO 8976 (DIN 5231 D).
Material: Chrome vanadium steel, drop forged.

overall length	mm	180	250
70 6000	Water pump pliers with stepped fine adjustment, black	XXX	XXX
Hexagon across flats	mm	28	35
Jaw capacity for pipes	inch	1	1.1/2
Number of fine adjustment steps		10	12



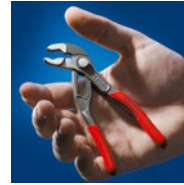
KNIPEX **Water pump pliers Cobra® with box joint and stepped fine adjustment**



Box joint (= double guides). Designed to prevent fingers being trapped. Push-button **fine step adjustment**. Concave profile serrated jaws, self-clamping.

- 70 5800/5850 – Jaws chemically blacked, polished head, plastic coated handles.
- 70 5850 – Additional quick adjustment at the workpiece without pressing the button.
- 70 5900 – Pliers chrome-plated, plastic coated handles.
- 70 5950 – Jaws chrome-plated, handles with multi-component covering.

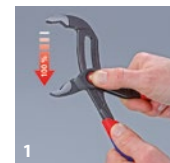
Standard: ISO 8976 (DIN 5231 D).
Material: Chrome vanadium electro-steel, drop forged.



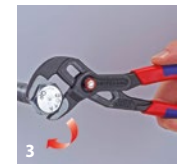
Self-tightening on pipes and nuts: no slipping on the workpiece; the entire operating force is available for turning the workpiece; there is no need to apply high force to close the handles, so little effort required.



overall length	mm	125	150	180	250	300	400	560
70 5800	Water pump pliers Cobra® chemically blacked	XXX	XXX	XXX	XXX	XXX	XXX	XXX
70 5850	Water pump pliers Cobra® QuickSet chemically blacked with quick adjustment	–	–	–	XXX	XXX	–	–
70 5900	Water pump pliers Cobra® chrome-plated	–	–	XXX	XXX	XXX	–	–
70 5950	Water pump pliers Cobra® chrome-plated with coated handles	–	–	–	XXX	XXX	–	–
Hexagon across flats	mm	27	30	36	46	60	95	120
Jaw capacity for pipes	inch	1	1.1/4	1.1/2	2	2.3/4	3.1/2	4.1/2
Number of fine adjustment steps (70 5800, 70 5900, 70 5950)		13	11	18	25	30	27	20
Number of fine adjustment steps (70 5850)		–	–	–	25	25	–	–



Cobra® QuickSet 70 5850
1 Press the button – the pliers open fully.
2 Position the top jaw – simply push the pliers closed.
3 The joint pin locks into position when force is applied.



HAZET **Water pump pliers with quick lever action**



With quick lever actuation. No need to grasp for adjustment, can be used one-handed. Jaw serration additionally induction hardened for long working life. Teeth set opposite to the direction of rotation, for a better grip. Precise spacing due to laser-cut adjustment teeth. Handles dip coated.

- 70 6340 – For right-handed users.
- 70 6350 – For left-handed users.

Standard: ISO 8976
Material: Chrome vanadium steel, drop forged.

Overall length	mm	260
70 6340	Water pump pliers with quick lever action for right-handed users	XXX
70 6350	Water pump pliers with quick lever action for left-handed users	XXX
Hexagon across flats	mm	50
Jaw capacity for pipes	inch	2

