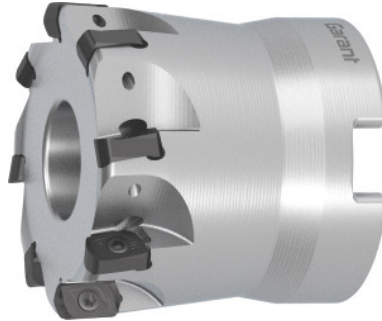


**Garant**

**GARANT Power Q Mini high feed rate milling cutter, with bore, Ø D / number of effective cutting edges Z: 42/7 mm**


**Order data**

Order number	213058 42/7
GTIN	4062406566739
Item class	210

**Description**
**Version:**

High feed rate milling system for **smaller machining diameters** and **greater operating depths**. Particularly **effective due to the large number of cutting edges**.

**Spare part:**

Pack of insert screws No. 219799 9 (7IP; 1.2Nm).

**Note:**

Use GARANT torque screwdriver TQ No. **211750 size 1.2** with bit No. **674252 size 7IP**.

Tool exchange: PowerCard

Through-coolant: yes

Number of cutting edges Z: 7

Ø D<sub>3</sub>: 36 mm

Overall length L<sub>tot</sub>: 40 mm

Mounting bore Ø: 16 mm

Circular interpolation milling Ø D<sub>min</sub>: 73.1 mm

Circular interpolation milling Ø D<sub>max</sub>: 83.5 mm

**Technical description**

Through-coolant	yes
-----------------	-----

Number of cutting edges Z	7
Ø D <sub>3</sub>	36 mm
Ramping length L for $\alpha_{\max}$	40.9 mm
Mounting bore Ø	16 mm
Cutting edge Ø D <sub>c</sub>	42 mm
Circular interpolation milling Ø D <sub>min</sub>	73.1 mm
Circular interpolation milling Ø D <sub>max</sub>	83.5 mm
Overall length L <sub>tot</sub>	40 mm
Ramping angle $\alpha_{\max}$	1.4 degrees
Circular interpolation milling a <sub>p</sub>	1 mm
Shank type	with bore
Milling application	Circular milling
Milling application	Plunging
Milling application	Circular milling
Machining strategy	HPC
Tool exchange	PowerCard