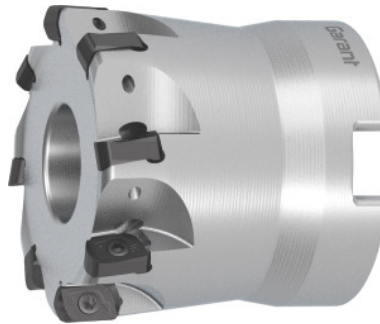


Garant

GARANT Power Q Mini high feed rate milling cutter, with bore, Ø D / number of effective cutting edges Z: 66/8 mm



Order data

| | |
|--------------|---------------|
| Order number | 213058 66/8 |
| GTIN | 4062406566784 |
| Item class | 210 |

Description

Version:

High feed rate milling system for **smaller machining diameters** and **greater operating depths**. Particularly **effective due to the large number of cutting edges**.

Spare part:

Pack of insert screws No. 219799 9 (7IP; 1.2Nm).

Note:

Use GARANT torque screwdriver TQ No. **211750 size 1.2** with bit No. **674252 size 7IP**.

Tool exchange: PowerCard

Through-coolant: yes

Number of cutting edges Z: 8

Ø D₃: 60 mm

Overall length L_{tot}: 40 mm

Mounting bore Ø: 22 mm

Circular interpolation milling Ø D_{min}: 121.1 mm

Circular interpolation milling Ø D_{max}: 131.5 mm

Technical description

| | |
|---|----------|
| Circular interpolation milling Ø D _{min} | 121.1 mm |
|---|----------|

| | |
|---|------------------|
| Circular interpolation milling $\varnothing D_{\max}$ | 131.5 mm |
| Ramping length L for α_{\max} | 70.7 mm |
| Overall length L_{tot} | 40 mm |
| Number of cutting edges Z | 8 |
| Circular interpolation milling a_p | 1 mm |
| Through-coolant | yes |
| Ramping angle α_{\max} | 0.81 degrees |
| $\varnothing D_3$ | 60 mm |
| Cutting edge $\varnothing D_c$ | 66 mm |
| Mounting bore \varnothing | 22 mm |
| Shank type | with bore |
| Milling application | Circular milling |
| Milling application | Plunging |
| Milling application | Circular milling |
| Machining strategy | HPC |
| Tool exchange | PowerCard |