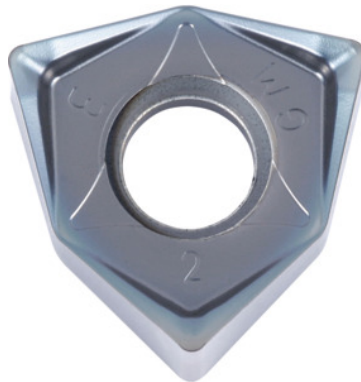



WNMU 080608 EN-GM, PR1525, Type: ST1400

Order data

Order number	225620 ST1400
GTIN	4960664648948
Item class	25A

Description
Version:

MEGACOAT-coated indexable inserts with **6 edges** – due to double-sided version. The high axial rake angle up to a maximum of 13° significantly reduces the cutting force.

Application:

The **GM geometry** is the first choice for general machining.

Note:

Standard application values for $a_e = 0.3 \times D$.

Feed f_z per tooth: 0.1 – 0.3 mm

ISO code indexable insert: WNMU 080608 EN-GM

Corner radius: 0.8 mm

Technical description

Type	ST1400
ISO code indexable insert	WNMU 080608 EN-GM
Corner radius	0.8 mm
Number of changes/inserts	6

Grade	PR1525
Tool material	Carbide
Feed f_z per tooth	0.1 – 0.3 mm
Type of product	Indexable insert for milling