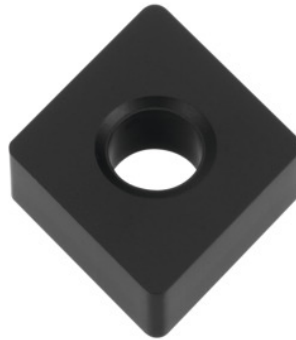


**Garant**
**CNMA 120412, Type: HB7210-1**


### Order data

Order number	250161 HB7210-1
GTIN	4062406058913
Item class	21G

### Description

CNMA 120412 HB7210-1 Grade: HB7210-1  
 Tolerance: M  
 Cutting depth  $a_p$ : 0.4 - 6.5 mm  
 Feed  $f$ : 0.3 - 0.7 mm/rev.  
 Cutting speed  $v_c$  main application: 100 - 450 m/min

### Technical description

Cutting conditions	slightly interrupted
Feed $f$	0.3 - 0.7 mm/rev.
Tool material	Carbide
Finishing/roughing assignment	Skrubbearbejdning-sletbearbejdning
Corner radius	1.2 mm
Cutting depth $a_p$	0.4 - 6.5 mm
Main application	K

Cutting speed $v_c$ main application	100 - 450 m/min
Grade	HB7210-1
Coating	TiCN
ISO code indexable insert	CNMA 120412
Number of changes/inserts	4
Tolerance	M
Type of product	Indexable insert for turning