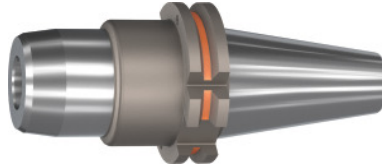


**Garant**
**Hydraulic clamping chuck BASIC short, slim, Form ADB, SK 40, Clamping range  $\varnothing$  D1: 6 mm**

**Order data**

Order number	302043 6
GTIN	4062406544317
Item class	31A

**Description**
**Version:**

- Radial run-out  $\leq 3 \mu\text{m}$ .
- With Balluffchip bore.
- Axial length adjustment (adjustment 10 mm) available.
- Flexible due to the use of reducing sleeves.
- Coolant pressure up to 80 bar.

**Application:**

For drilling, reaming and finish milling.

**Optional extras:**

Back stop screws for direct clamping / use of reducing sleeves on request.

Pull studs (PS) No. 308600 – 308806, PS wrenches No. 308810 – 308830, size 12; 20; 32: Sleeve reducer No. 302135 – 302180.

Machining strategy: HSC

Overhang dimension A: 80.5 mm

$\varnothing$  D<sub>2</sub>: 26 mm

External  $\varnothing$  D: 49.5 mm

Reach L<sub>1</sub>: 61.5 mm

L<sub>2</sub>: 29.5 mm

Adjustment travel V: 10 mm

**Technical description**

Adjustment travel V	10 mm
---------------------	-------

Clamping $\varnothing D_1$	6 mm
Thread M	M5
$L_2$	29.5 mm
Overhang dimension A	80.5 mm
Reach $L_1$	61.5 mm
$\varnothing D_2$	26 mm
External $\varnothing D$	49.5 mm
Adapter	SK 40
Arbor standard	ISO 7388-1
Shape	ADB
Through-coolant	yes, with max. 80 bar
Balance quality G at rotational speed	G 2.5 at 25,000 rpm
Concentricity	$\leq 3 \mu\text{m}$
Machining strategy	HSC
Type of product	Hydraulic clamping chuck