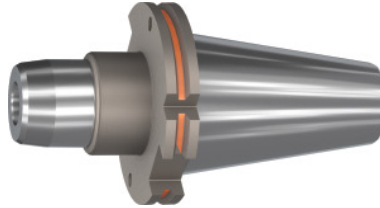


Garant

Hydraulic clamping chuck BASIC short, slim, Form ADB, SK 50, Clamping range \varnothing D1: 32 mm



Order data

Order number	302053 32
GTIN	4062406544416
Item class	31A

Description

Version:

- Radial run-out $\leq 3 \mu\text{m}$.
- With Balluffchip bore.
- Axial length adjustment (adjustment 10 mm) available.
- Flexible due to the use of reducing sleeves.
- Coolant pressure up to 80 bar.

Application:

For drilling, reaming and finish milling.

Optional extras:

Back stop screws for direct clamping / use of reducing sleeves on request.

Pull studs (PS) No. 308600 – 308806, PS wrenches No. 308810 – 308830, size 12; 20; 32: Sleeve reducer No. 302135 – 302180.

Machining strategy: HSC

Overhang dimension A: 80.5 mm

\varnothing D₂: 103.2 mm

External \varnothing D: 70 mm

Reach L₁: 84.1 mm

L₂: 25.5 mm

Adjustment travel V: 10 mm

Technical description

Reach L ₁	84.1 mm
suitable reducing adapter	302180; 302175
Thread M	M16×1
Ø D ₂	103.2 mm
External Ø D	70 mm
Clamping Ø D ₁	32 mm
L ₂	25.5 mm
Adjustment travel V	10 mm
Overhang dimension A	80.5 mm
Adapter	SK 50
Arbor standard	ISO 7388-1
Shape	ADB
Through-coolant	yes, with max. 80 bar
Balance quality G at rotational speed	G 2.5 at 25,000 rpm
Concentricity	≤ 3 µm
Machining strategy	HSC
Type of product	Hydraulic clamping chuck