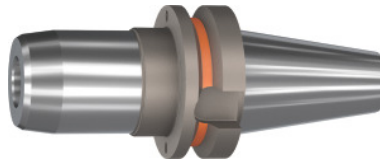


Garant
BASIC hydraulic chuck short, slim, Form ADB, BT 40, Clamping range \varnothing D1: 6 mm

Order data

Order number	303473 6
GTIN	4062406531058
Item class	31A

Description
Version:

- Radial run-out $\leq 3 \mu\text{m}$.
- Balluffchip bore.
- Axial length adjustment possible (adjustment range $V = 10 \text{ mm}$).
- Flexibility thanks to the use of reducing adapters.
- Coolant pressure up to 80 bar.

Application:

For drilling, reaming and finish milling.

Delivery conditions:

Incl. length adjustment screw and hexagon key with T-handle.

Optional extras:

Pull studs (PS) No. 308760 – 308806, reducing sleeves No. 302135 – 302180.

Overhang dimension A: 90 mm

\varnothing D₂: 26 mm

External \varnothing D: 44.5 mm

L₂: 43 mm

Thread M: M5

Overhang length L₁ incl. recess: 63 mm

Technical description

Thread M	M5
Overhang dimension A	90 mm

L ₂	43 mm
Ø D ₂	26 mm
Overhang length L ₁ incl. recess	63 mm
External Ø D	44.5 mm
Adapter	BT 40
Arbor standard	JIS B6339
Arbor standard	JIS B6339
Shape	ADB
Through-coolant	yes, with max. 80 bar
Balance quality G at rotational speed	G 2.5 at 25,000 rpm
Concentricity	≤ 3 µm
Machining strategy	HPC
Balluffchip bore	yes
Type of product	Hydraulic clamping chuck