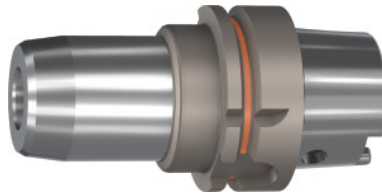


**Garant**
**Hydraulic clamping chuck BASIC short, slim, HSK-A 63, Clamping range  $\varnothing$  D1: 20 mm**

**Order data**

Order number	307513 20
GTIN	4062406544478
Item class	31A

**Description**
**Version:**

- Axial length adjustment, adjustment travel 10 mm.
- With Balluffchip bore.

**Application:**

- High metal removal rate (but not for extreme heavy machining).
- For drilling, reaming, and milling.

**Optional extras:**

Reducer sleeves No. 302135 – 302180, coolant tube No. 309880, coolant tube socket wrench No. 309890, parallel wipers No. 343720.

**Note:**

A-dimension = 200 mm available on request!

Overhang dimension A: 90 mm

$\varnothing$  D<sub>2</sub>: 42 mm

External  $\varnothing$  D: 50 mm

L<sub>2</sub>: 48 mm

L<sub>3</sub>: 51 mm

Adjustment travel V: 10 mm

**Technical description**

$\varnothing$ D <sub>2</sub>	42 mm
External $\varnothing$ D	50 mm

Clamping $\varnothing D_1$	20 mm
suitable reducing adapter	302155; 302160; 302165
Overhang dimension A	90 mm
Adjustment travel V	10 mm
$L_3$	51 mm
$L_2$	48 mm
Thread M	M16x1
Adapter	HSK-A 63
Arbor standard	DIN 69893
Arbor standard	DIN 69882-6
Arbor standard	DIN 69882-7
Shape	A
Through-coolant	yes, with max. 80 bar
Balance quality G at rotational speed	G 2.5 at 25,000 rpm
Concentricity	$\leq 3 \mu\text{m}$
Machining strategy	HSC
Type of product	Hydraulic clamping chuck

## Accessories

Slotted reducing adapter Clamping range $\varnothing D1$ 3 mm	302160 3
Slotted reducing adapter Clamping range $\varnothing D1$ 3 mm	302155 3
Slotted reducing adapter Clamping range $\varnothing D1$ 14 mm	302155 14
Slotted reducing adapter Clamping range $\varnothing D1$ 10 mm	302160 10
Slotted reducing adapter Clamping range $\varnothing D1$ 4 mm	302155 4
Slotted reducing adapter Clamping range $\varnothing D1$ 4 mm	302160 4
Slotted reducing adapter Clamping range $\varnothing D1$ 8 mm	302155 8
Slotted reducing adapter Clamping range $\varnothing D1$ 14 mm	302160 14
Slotted reducing adapter Clamping range $\varnothing D1$ 8 mm	302160 8

Parallel wiper Plastic Pin Ø 20 mm	343720 20
Slotted reducing adapter Clamping range Ø D1 16 mm	302155 16
Slotted reducing adapter Clamping range Ø D1 16 mm	302160 16
Slotted reducing adapter Clamping range Ø D1 6 mm	302155 6
Slotted reducing adapter Clamping range Ø D1 5 mm	302155 5
Slotted reducing adapter Clamping range Ø D1 12 mm	302160 12
Slotted reducing adapter Clamping range Ø D1 6 mm	302160 6
Slotted reducing adapter Clamping range Ø D1 12 mm	302155 12
Slotted reducing adapter Clamping range Ø D1 10 mm	302155 10
Slotted reducing adapter Clamping range Ø D1 5 mm	302160 5