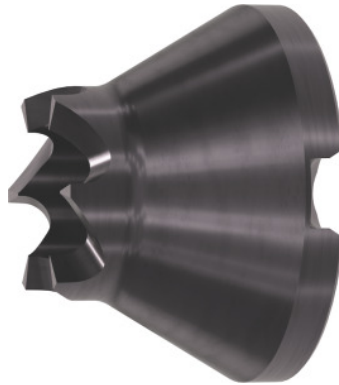




## Driver head CoAE, direct toothed Right-hand, Working range Ø: 21-40 mm



### Order data

Order number	327601 21-40
GTIN	4019208501277
Item class	33I

### Description

#### Version:

Face drivers are clamping tools used in mechanical production. They are used for transmitting torque from the machine spindle to the workpiece. The face driver (also called headstock centre) is used to clamp shafts between tips in machine tools. The complete outer contour of the workpiece can be machined using a single set-up. High concentricity requirements can be achieved by mounting on the workpiece centres.

**The CoAE is a constant face driver** which is manually clamped in a lathe. It is used predominantly for machining over the entire length. The components are clamped at the end face. Milling can also be performed in the same set-up. It impresses thanks to a constant clamping force, even on uneven end faces or in the case of large deviations from the orthogonality. The mounting is free of play radially. The modular design allows different tips to be used, as well as various driver heads with a single face driver, thus allowing machining of a wide variety of geometries. The CoAE replaces the RöhM face driver CoA. Suitable for manually clamping machine tools.

**Direct toothed** driver heads.

#### Application:

To replace or extend the working range of sets No. 327541.

#### Suitable for :

Base bodies No. 327521 and 327541.

#### Note:

CoAE driver heads are also suitable for the old system CoA (square support ram).

Clamping  $\varnothing$  A: 20 mm

Length C: 30 mm

for which suitable centre point  $\varnothing$  D: 12 mm

---

## Technical description

Working range $\varnothing$	21 - 40 mm
Length C	30 mm
Clamping $\varnothing$ A	20 mm
for which suitable centre point $\varnothing$ D	12 mm
Application type	right-hand
Tooth profile	fixed
Type of product	Face driver