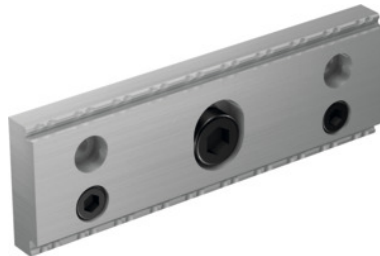


**Garant**
**Gripp front jaw, for jaw width: 160 mm**

**Order data**

Order number	362392 160
GTIN	4062406241933
Item class	31S

**Description**
**Version:**

High precision when clamping. The additional jaws greatly extend the application range of your vice. Optimised tooth profile for high retention forces.

Reversible jaw with 2 clamping steps. One clamping step of 3 mm height and one clamping step of 5 mm height.

Jaw width b: 12 mm

Jaw height h: 50 mm

suitable for colour code: HD Allmatic

suitable for colour code: LC

suitable for colour code: HiPo

suitable for colour code: TC

**Technical description**

Jaw height h	50 mm
for jaw width	160 mm
suitable for colour code	HD Allmatic
suitable for colour code	LC
suitable for colour code	HiPo

suitable for colour code	TC
suitable for colour code	HD Horex
suitable for colour code	NC8
suitable for colour code	Titan 2
Jaw width b	12 mm
Type of product	Vice - jaw