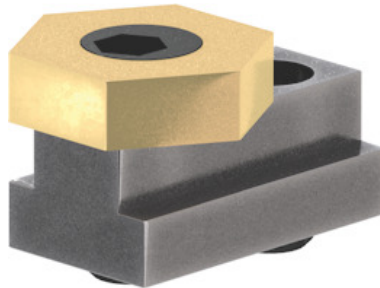




Eccentric clamp, T-slot nominal size: 8 mm



Order data

Order number	370009 8
GTIN	4046368504220
Item class	37M

Description

Version:

- **Small footprint, so few interference contours.**
- **For clamping workpieces of any shape.**
- **Hexagon brass washer with eccentric steel screw.**
- **Attachment in the T-slot using a locking clamping screw.**

Application:

Particularly suitable for clamping flat components.

Supplied with:

1 pc. steel screw, 1 pc. clamping washer.

Thread M: M6

Hexagon washer AF: 16 mm

Internal hexagon AF₁: 3 mm

AF₂: 3 mm

Eccentric travel S₁: 1 mm

Washer height H: 4.8 mm

Technical description

Thread M	M6
Clamping force	3.4 kN
maximum tightening torque	8.5 Nm

Eccentric travel S_1	1 mm
Washer height H	4.8 mm
Internal hexagon AF_1	3 mm
Hexagon washer AF	16 mm
Length L	23.2 mm
AF_2	3 mm
maximum tightening torque, locking screw	7.7 Nm