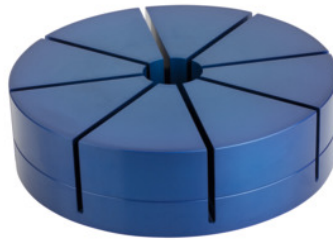




Collet mechanical External clamping, External Ø D: 65 mm



Order data

Order number	370126 65
GTIN	4059245292547
Item class	37K

Description

Version:

- For clamping workpieces with complex contours for 5-face machining.
- Minimum clamping depth of 2 mm.
- Clamping stroke 0.3 mm.

Material:

High-tensile aluminium.

Supplied with:

Clamping ring for machining.

Height H: 25 mm

Maximum machining depth T: 10 mm

Technical description

Version	External clamping
Height H	25 mm
Maximum machining depth T	10 mm
Clamping range	0.3 mm
Type of product	Collet mechanical

Accessories

Adapter for mechanical collet External Ø D 65 mm

370125 65