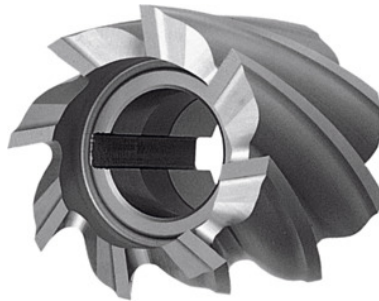


Garant
Shell end mill N, uncoated, Ø×width js16: 40X20 mm

Order data

Order number	181000 40X20
GTIN	4045197096241
Item class	11U

Description
Version:

The end mills cut on the front face and on the circumference.

Application:

Type N = standard toothing, 30° helix.

Note:

Sizes 30×30, 35×35, 40×20, 50×25, 60×60 can only be mounted using a bore keyway.

f_z for $a_e = 0.5 - 1 \times D$.

Bore Ø H7: 16 mm

No. of teeth Z: 6

Feed f_z for side milling in steel < 750 N/mm²: 0.07 mm

Technical description

No. of teeth Z	6
Cutting edge Ø D_c	40 mm
Bore Ø H7	16 mm
Feed f_z for side milling in steel < 750 N/mm ²	0.07 mm
Shank type	with bore

Overall height	20 mm
Coating	uncoated
Tool material	HSS Co 5
Standard	DIN 841
Type	N
Tolerance nominal \varnothing	js16
Shell end mill arbor	With drive keyway
Helix angle	30 degrees
Direction of infeed	horizontal and oblique
Through-coolant	no
Corner chamfer angle	90 degrees
Colour ring	without
Type of product	Cylindrical milling cutter