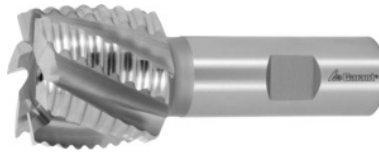


**Garant**
**Roughing end mill, uncoated, Ø k12 DC: 30 mm**

**Order data**

Order number	192970 30
GTIN	4045197109095
Item class	11W

**Description**
**Version:**
**Relief ground knuckle form profile.**

End face recessed. Wide lands permit frequent regrinding without losing the profile.

**Advantage:**

For roughing at low cutting depths (predominantly face milling).

**Very reliable, due to lower load on the machine spindle.**

Through-coolant: no

Tolerance nominal Ø: k12

No. of teeth Z: 5

Helix angle: 30 degrees

Direction of infeed: horizontal and oblique

Shank: DIN 1835 B to h6

No. of teeth Z: 5

Flute length  $L_c$ : 30 mm

Overall length L: 90 mm

Shank Ø  $D_s$ : 20 mm

Feed  $f_z$  for slot milling in steel < 750 N/mm<sup>2</sup>: 0.055 mm

**Technical description**

Feed $f_z$ for slot milling in steel < 750 N/mm <sup>2</sup>	0.055 mm
No. of teeth Z	5
Cutting edge Ø $D_c$	30 mm

Shank $\varnothing D_s$	20 mm
Overall length L	90 mm
Flute length $L_c$	30 mm
Direction of infeed	horizontal and oblique
Shank	DIN 1835 B to h6
Tolerance nominal $\varnothing$	k12
Helix angle	30 degrees
Corner chamfer angle	90 degrees
Coating	uncoated
Tool material	HSS Co 8
Milling profile	NR
Through-coolant	no
Colour ring	without
Type of product	End mill