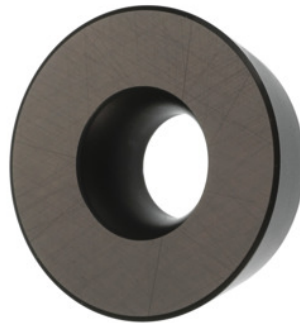


Garant
RDHW 1604 MOT, HB7525, Type: ST900


Order data

Order number	212296 ST900
GTIN	4045197761262
Item class	21A

Description

Version:

All indexable inserts are suitable for use with carriers that are 0° negative and also with carriers that are 7° positive.

Note:

Standard application values for $a_e = 0.3 \times D$ / $a_{pmax} = 5.0$ mm.

Feed f_z per tooth: 0.3 mm

ISO code indexable insert: RDHW 1604 MOTN

Type: ST900

Technical description

Type	ST900
ISO code indexable insert	RDHW 1604 MOTN
Tool material	Carbide
Grade	HB7525
Feed f_z per tooth	0.3 mm
Number of changes/inserts	1

Type of product

Indexable insert for milling