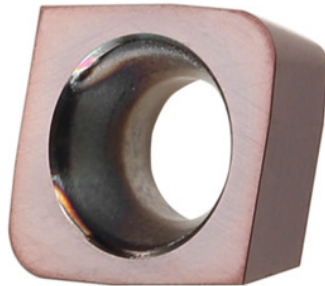


Garant**CPHX 060205 ER, HB4015, Type: ST1400**

Order data

Order number	212552 ST1400
GTIN	4062406098698
Item class	21A

Description

Version:

- Inserts with improved wiper geometry for more efficient machine processes in tool and die manufacture.
- Extreme time saving available due to large stepover and high feed rate per tooth.
- Milling inserts with radial and axial wiper geometry.

Concentricity +/- 0.020 mm.

Recommendation:

For pure face milling operations, reduce V_c by 30%.

Note:

Standard application values for a_e 0.2 mm.

L_{wa} represents the axial wiper length.

L_{wr} represents the radial wiper length.

Feed f_z in steel < 1400 N/mm²: 0.25 mm

Technical description

Corner radius	0.5 mm
Grade	HB4015

Tool material	Carbide
Axial length of wiper	1 mm
Radial length of wiper	1.5 mm
Corner radius R_1	0,5 mm
Feed f_z in steel < 1400 N/mm ²	0.25 mm
Number of changes/inserts	2
Type of product	Indexable insert for milling