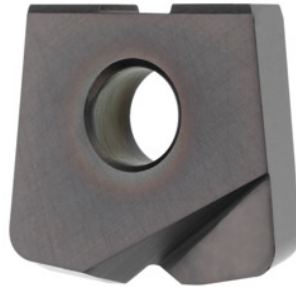


**Garant**
**Milling insert Ø 12 mm Highfeed, Type: ST1400**

**Order data**

Order number	212752 ST1400
GTIN	4045197761873
Item class	21A

**Description**
**Version:**

Detailed application values can be found in the GARANT machining handbook No. 110020.

- Radius, concentricity:  $\pm 0.015$  mm.
- Interchange accuracy from insert to insert:  $\pm 0.025$  mm.

**Application:**

Torus cutters "**Highfeed**" for higher feed rates.

Feed  $f_z$  in steel  $< 1400$  N/mm<sup>2</sup>: 0.6 mm

Grade: HB7530

**Technical description**

Type	ST1400
Grade	HB7530
Tool material	Carbide
maximum cutting depth $a_{p\max}$	0.6 mm
Programming radius at $a_{p\max}$	1.4 mm

Feed $f_z$ in short-chipping aluminium	0.5 mm
Feed $f_z$ in steel < 1400 N/mm <sup>2</sup>	0.6 mm
Number of changes/inserts	1
Type of product	Indexable insert for milling