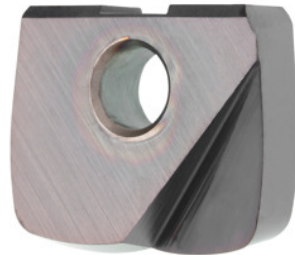


**Garant**
**Milling insert Ø 12 mm stub conical, Type: ST1400**

**Order data**

Order number	212768 ST1400
GTIN	4062406103132
Item class	21A

**Description**
**Version:**

**Detailed application values can be found in the GARANT machining handbook No. 110020.**

· **Radius, concentricity and interchange accuracy:  $\pm 0.015$  mm.**

Feed  $f_z$  in steel < 60 HRC: 0.05 mm

Grade: HB4015

**Technical description**

Type	ST1400
Grade	HB4015
Corner radius	1 mm
Tool material	Carbide
Axial length of wiper	12 mm
Radial length of wiper	24 mm
Corner radius $R_1$	1 mm
Flute length $L_c$	6 mm

Feed $f_z$ in steel < 1400 N/mm <sup>2</sup>	0.08 mm
Feed $f_z$ in steel < 60 HRC	0.05 mm
Number of changes/inserts	1
Coating	TiN
Type of product	Indexable insert for milling