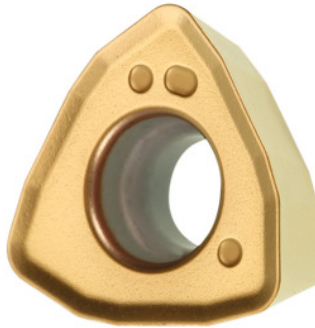


**Garant**
**XDMT120516ZDER, HB4430, Type: TI**


### Order data

Order number	212895 TI
GTIN	4045197943217
Item class	21A

### Description

**Note:**

 Standard application values for  $a_e = 0.5...1 \times D / a_{p\max}$ 

 Programming radius at  $a_{p\max}$ : 3 mm

 Feed  $f_z$  per tooth: 0.8 mm

### Technical description

Feed $f_z$ per tooth	0.8 mm
Type	Ti
Corner radius	1,6 mm
ISO code indexable insert	XDMT120516ZDER
Grade	HB4430
Tool material	Carbide
recommended cutting depth $a_{p\max}$	0.9 mm
maximum cutting depth $a_{p\max}$	2 mm

Programming radius at $a_{p\max}$	3 mm
Number of changes/inserts	3
Type of product	Indexable insert for milling