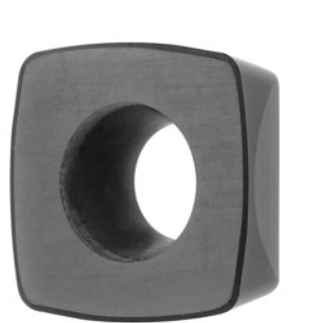


Garant
XDLW 070308 TN, KU7710, Type: GGG


Order data

Order number	212941 GGG
GTIN	4045197720566
Item class	21H

Description

Note:

Standard application values for $a_e = 0.5 \dots 1 \times D / a_{p \max}$

Do not tighten insert screw No. 219810 to more than 1.5 Nm!

Feed f_z per tooth: 0.36 mm

ISO code indexable insert: XDLW 070308 TN

Type: GGG

Corner radius: 0.8 mm

Programming radius at $a_{p \max}$: 1.58 mm

Technical description

Type	GGG
ISO code indexable insert	XDLW 070308 TN
Programming radius at $a_{p \max}$	1.58 mm
Corner radius	0.8 mm
Grade	KU7710
Tool material	Ceramic

maximum cutting depth $a_{p\max}$	0.6 mm
Feed f_z per tooth	0.36 mm
Number of changes/inserts	4
Type of product	Indexable insert for milling