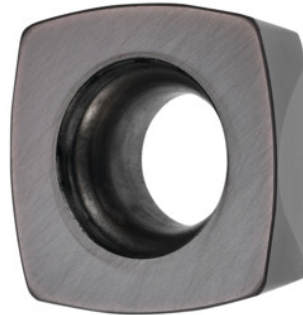


**Garant**
**XDLW 120408 TN, HB7720, Type: ST1400**


### Order data

Order number	212975 ST1400
GTIN	4045197454911
Item class	21A

### Description

**Note:**

Standard application values for  $a_e = 0.5 \dots 1 \times D / a_{p \max}$

Feed  $f_z$  per tooth: 1 mm

ISO code indexable insert: XDLW 120408 TN

Type: ST1400

Corner radius: 0.8 mm

Programming radius at  $a_{p \max}$ : 2.6 mm

### Technical description

Type	ST1400
ISO code indexable insert	XDLW 120408 TN
Programming radius at $a_{p \max}$	2.6 mm
Corner radius	0.8 mm
Grade	HB7720
Tool material	Carbide

maximum cutting depth $a_{p\max}$	1.8 mm
Feed $f_z$ per tooth	1 mm
Number of changes/inserts	4
Type of product	Indexable insert for milling