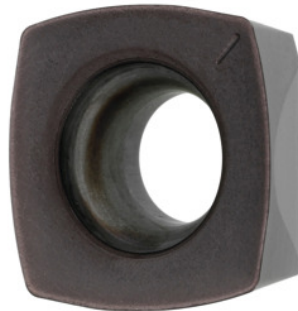


**Garant**
**XDLT 120408 ER, HB7635, Type: INOX**

**Order data**

Order number	212979 INOX
GTIN	4045197581822
Item class	21A

**Description**
**Note:**

Standard application values for  $a_e = 0.5 \dots 1 \times D / a_{p \max}$

Feed  $f_z$  per tooth: 1.07 mm

ISO code indexable insert: XDLT 120408 ER

Type: INOX

Corner radius: 0.8 mm

Programming radius at  $a_{p \max}$ : 2.6 mm

**Technical description**

Type	INOX
ISO code indexable insert	XDLT 120408 ER
Programming radius at $a_{p \max}$	2.6 mm
Corner radius	0.8 mm
Grade	HB7635
Tool material	Carbide

maximum cutting depth $a_{p\max}$	1.8 mm
Feed $f_z$ per tooth	1.07 mm
Number of changes/inserts	4
Type of product	Indexable insert for milling