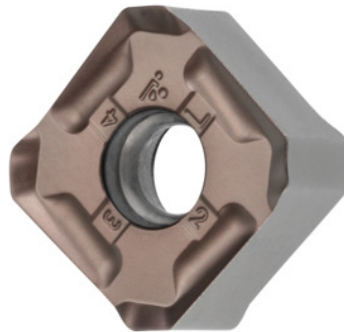


**Garant**
**SNMU 14T7 ANER, HB7520, Type: ST900**

**Order data**

Order number	213446 ST900
GTIN	4045197605979
Item class	21A

**Description**
**Version:**

Double-sided with 2x4 cutting edges.

**Recommendation:**

**For the best surface quality choose insert tolerance E in combination with wiper edge insert(s).**

**Note:**

Standard application values for  $a_e = 0.5 \dots 1 \times D / a_{p \max}$

maximum cutting depth  $a_{p \max}$ : 6 mm

Feed  $f_z$  per tooth: 0.3 mm

**Technical description**

Feed $f_z$ per tooth	0.3 mm
Type	ST900
ISO code indexable insert	SNMU 14T7 ANER
Grade	HB7520
Tool material	Carbide

maximum cutting depth $a_{p\max}$	6 mm
Number of changes/inserts	8
Type of product	Indexable insert for milling