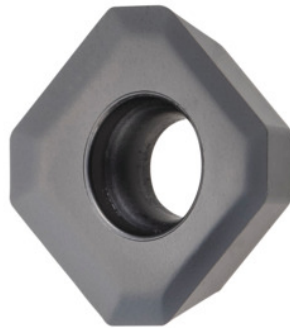


**Garant**
**SDHT 0903 AEFN diamond-coated, HB7810, Type: ALU**

**Order data**

|              |               |
|--------------|---------------|
| Order number | 214481 ALU    |
| GTIN         | 4045197555731 |
| Item class   | 21B           |

**Description**
**Version:**

- **Indexable inserts for higher cutting speeds and feed rates.**
- **Precision sintered and ground for best surface finish quality.**
- **Micro-grain structure gives high strength and wear resistance.**

**Note:**

Standard application values for  $a_e = 0.5 \dots 1 \times D$  /  $a_{p \max} = 3$  mm.

Feed  $f_z$  per tooth: 0.19 mm

**Technical description**

|                           |                |
|---------------------------|----------------|
| Feed $f_z$ per tooth      | 0.19 mm        |
| Type                      | ALU            |
| ISO code indexable insert | SDHT 0903 AEFN |
| Grade                     | HB7810         |
| Tool material             | Carbide        |
| Number of changes/inserts | 4              |

Type of product

Indexable insert for milling