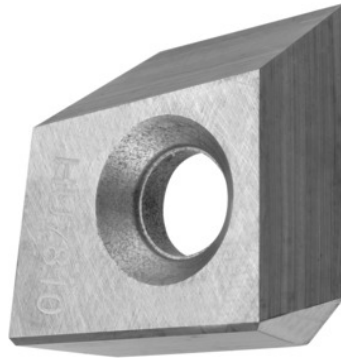


**Garant****Wiper edge insert, HU7810, Type: ALU****Order data**

Order number	214563 ALU
GTIN	4045197676009
Item class	21B

**Description****Version:**

Carbide indexable inserts with wide wiper edge for fitting on adjustable insert seatings. Length of the flat chamfer: 5 mm.

Setting angle  $\kappa$ : Wiper insert

**Technical description**

Type	ALU
ISO code indexable insert	Wiper edge insert
Setting angle $\kappa$	Wiper insert
Grade	HU7810
Tool material	Carbide
Type of product	Indexable insert for milling

