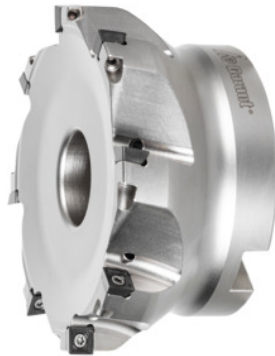


Garant
Softcut® HSI, wide pitch, with bore, Ø D / number of teeth Z: 100/8 mm

Order data

Order number	214906 100/8
GTIN	4045197674494
Item class	210

Description
Version:

Wear-resistant heat-treated steel with corrosion-inhibiting coating. Precise indexable insert seating by use of appropriate torque. Wide and close tooth pitches for individual milling strategies.

Application:

Particularly suitable for machines with lower drive power and for machining at greater depths and small entry diameters.

Note:

To use all **4 cutting edges**, the insert must **always be turned in the direction shown (anticlockwise)**.

Use GARANT torque screwdriver TQ No. **211750 size 2.2** with bit No. **674252 size 8IP**.

For exact 90° corners, select $a_p = 6$ mm.

Tool exchange: PowerCard

maximum cutting depth $a_{p,max}$: 6 mm

Overall length L_{tot} : 50 mm

Mounting bore Ø: 32 mm

suitable indexable insert: SO.. 0836..

Pack of insert screws: 219863 (8IP; 2.2 Nm)

Technical description

Cutting edge $\varnothing D_c$	100 mm
maximum cutting depth $a_{p\max}$	6 mm
Mounting bore \varnothing	32 mm
suitable indexable insert	SO.. 0836..
Overall length L_{tot}	50 mm
Pack of insert screws	219863 (8IP; 2.2 Nm)
Number of cutting edges Z	8
Series	Softcut®
Shank type	with bore
Setting angle κ	90 degrees
Milling application	Corner milling
Spacing of the cutters	unequal spacing
Through-coolant	yes
Tool exchange	PowerCard
Type of product	Indexable insert cutter

Accessories

PrecisionBit for Torx Plus®, shank E 6.3 Torx Plus® profile 8IP	674252 8IP
Torque screwdriver, fixed setting set torque 2,2 Nm	211750 2,2
Set of insert screws 10 pieces	219863