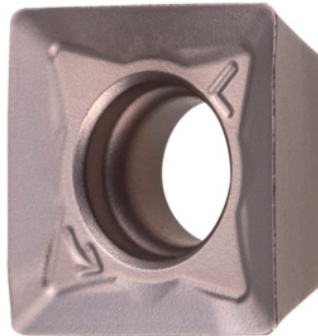


**Garant**
**SOMT 083604 PDER, HB7520, Type: ST900**

**Order data**

Order number	214918 ST900
GTIN	4045197674708
Item class	21A

**Description**
**Version:**

Increased insert thickness permits markedly deep trough geometry for positive cutting action, and minimises the susceptibility to fracture.

**Note:**

Standard application values for  $a_e = 0.3 \times D$ .

Corner radius: 0.4 mm

Feed  $f_z$  per tooth: 0.15 mm

**Technical description**

Feed $f_z$ per tooth	0.15 mm
Type	ST900
Corner radius	0.4 mm
ISO code indexable insert	SOMT 083604 PDER
Grade	HB7520
Tool material	Carbide

Number of changes/inserts	4
Type of product	Indexable insert for milling