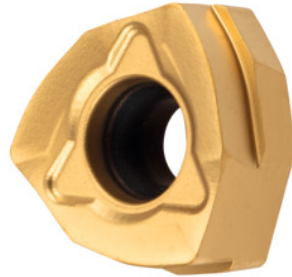




## XNEX 080610 High feed rate, HBM20, Type: UNI



### Order data

Order number	215117 UNI
GTIN	4062406103217
Item class	22A

### Description

#### Version:

6 edges ensure good value for money, due to a low price per cutting edge.  
 Single-sided 3-edge carbide indexable insert with special **geometry for high feed rates**.  
 Programming radius at  $a_{p,max}$  of 2.4 mm.

#### Note:

Standard application values for  $a_e = 0.3 \times D / a_p = 3 \text{ mm}$ .  
 $a_e = 0.6 \times D / a_p = 0.8 \text{ mm}$ .  
 maximum cutting depth  $a_{p,max}$ : 1 mm

### Technical description

Corner radius	1 mm
Grade	HBM20
Tool material	Carbide
maximum cutting depth $a_{p,max}$	1 mm
Number of changes/inserts	6
Coating	CVD

Type of product

Indexable insert for milling