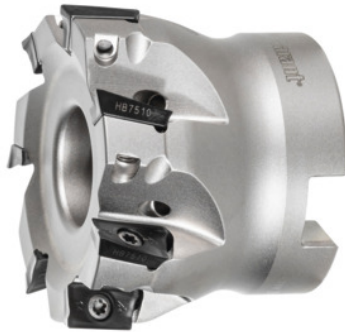


Garant
Softcut® 90° shoulder mill MTC, with bore, Ø D / number of teeth Z: 50/7 mm

Order data

Order number	215575 50/7
GTIN	4045197409379
Item class	210

Description
Version:

High precision indexable face mill with irregular pitch for very smooth cutting, very high precision, and very high metal removal rate. **New generation** of high performance indexable face mills **with special geometry for reduced cutting forces for MTC applications** under **unstable conditions** or **for spindles with low drive power**.

Application:

For face milling to large depths, also slotting. General use in all steels including stainless steels.

Spare part:

Pack of insert screws No. 219826 (8IP; 2.2 Nm).

Note:

The insert pocket must be modified when using indexable inserts with a radius greater than 2 mm.

GARANT torque screwdriver TQ No. **211750 size 2.2**, use bit No. **674252 size 8IP**.

Overall length L_{tot} : 40 mm

Mounting bore \varnothing : 22 mm

Circular interpolation milling $\varnothing D_{min}$: 87 mm

Circular interpolation milling $\varnothing D_{max}$: 99.1 mm

Circular interpolation milling a_p : 1.8 mm

Ramping angle α_{max} : 0.9 degrees

Technical description

suitable indexable insert	AP.. 1335..
Pack of insert screws	219826 (8IP; 2.2 Nm)
Cutting edge $\varnothing D_c$	50 mm
Mounting bore \varnothing	22 mm
Overall length L_{tot}	40 mm
Number of cutting edges Z	7
Ramping angle α_{max}	0.9 degrees
Circular interpolation milling a_p	1.8 mm
Ramping length L for α_{max}	572.9 mm
Circular interpolation milling $\varnothing D_{min}$	87 mm
Circular interpolation milling $\varnothing D_{max}$	99.1 mm
Series	Softcut®
Shank type	with bore
Setting angle κ	90 degrees
Milling application	End milling
Milling application	Circular milling
Milling application	Ramping
Spacing of the cutters	unequal spacing
Through-coolant	yes
Machining strategy	MTC
Tool exchange	PowerCard
Type of product	Indexable insert cutter

Accessories

PrecisionBit for Torx Plus®, shank E 6.3 Torx Plus® profile 8IP	674252 8IP
Set of insert screws 10-piece	219826

Torque screwdriver, fixed setting set torque 2,2 Nm

211750 2,2