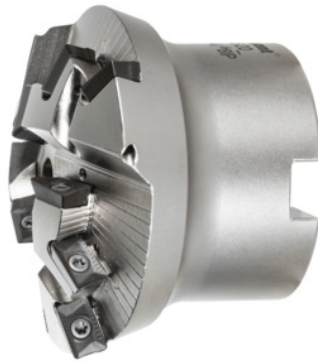


Garant
Chamfer mills, with bore, Angle γ : 20 Degrees

Order data

Order number	215795 20
GTIN	4045197658203
Item class	210

Description
Note:

Use GARANT torque screwdriver TQ No. **211750 size 1.2** with bit No. **674252 size 8IP**.

Tool exchange: PowerCard

Number of effective inserts Z_{eff} : 3

Number of indexable inserts: 9

Overall length L_{tot} : 52 mm

smallest $\varnothing D$: 17 mm

largest $\varnothing D_1$: 69 mm

achievable chamfer width b : 26 mm

Technical description

achievable chamfer height h	9 mm
suitable indexable insert	AP.. 1003
largest $\varnothing D_1$	69 mm
Pack of insert screws	219814 (8IP; 1.2 Nm)
achievable chamfer width b	26 mm

smallest \varnothing D	17 mm
achievable chamfer length l	27.5 mm
Number of effective inserts Z_{eff}	3
Overall length L_{tot}	52 mm
Mounting bore \varnothing	22 mm
Angle γ	20 degrees
Feed rate per tooth at h_{max}	0.3 mm
Number of indexable inserts	9
Shank type	with bore
Through-coolant	yes
Tool exchange	PowerCard
Type of product	Indexable insert cutter

Accessories

Torque screwdriver, fixed setting set torque 1,2 Nm	211750 1,2
PrecisionBit for Torx Plus®, shank E 6.3 Torx Plus® profile 8IP	674252 8IP
Set of insert screws 10-piece	219814