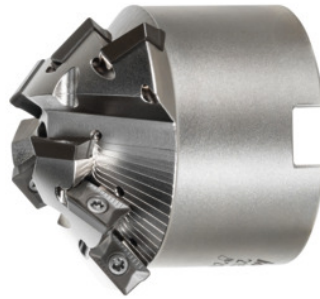


**Garant**
**Chamfer mills, with bore, Angle  $\gamma$ : 30 Degrees**

**Order data**

Order number	215795 30
GTIN	4045197383228
Item class	210

**Description**
**Note:**

Use GARANT torque screwdriver TQ No. **211750 size 1.2** with bit No. **674252 size 8IP**.

Tool exchange: PowerCard

Number of effective inserts  $Z_{\text{eff}}$ : 3

Number of indexable inserts: 9

Overall length  $L_{\text{tot}}$ : 52 mm

smallest  $\varnothing D$ : 17 mm

largest  $\varnothing D_1$ : 65 mm

achievable chamfer width b: 24 mm

**Technical description**

achievable chamfer length l	27.5 mm
achievable chamfer height h	13 mm
Mounting bore $\varnothing$	22 mm
achievable chamfer width b	24 mm
Pack of insert screws	219814 (8IP; 1.2 Nm)
smallest $\varnothing D$	17 mm

suitable indexable insert	AP.. 1003
Angle $\gamma$	30 degrees
largest $\varnothing D_1$	65 mm
Number of effective inserts $Z_{\text{eff}}$	3
Overall length $L_{\text{tot}}$	52 mm
Feed rate per tooth at $h_{\text{max}}$	0.2 mm
Number of indexable inserts	9
Shank type	with bore
Through-coolant	yes
Tool exchange	PowerCard
Type of product	Indexable insert cutter

## Accessories

PrecisionBit for Torx Plus®, shank E 6.3 Torx Plus® profile 8IP	674252 8IP
Torque screwdriver, fixed setting set torque 1,2 Nm	211750 1,2
Set of insert screws 10-piece	219814