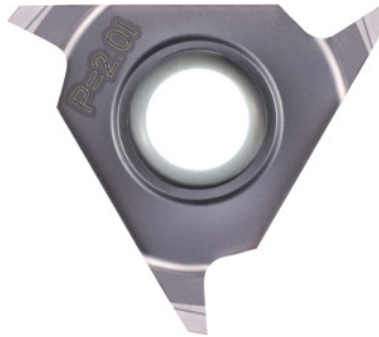


**Garant**
**Milling insert 60°, Carbide, Pitch: 3,5 mm**

**Order data**

Order number	217510 3,5
GTIN	4045197217608
Item class	21C

**Description**
**Note:**

55° inserts on request.

Cutting direction: right-hand and left-hand

Number of cutting edges Z: 3

Insert geometry: Full profile, internal

External Ø D: 23 mm

Depth t: 2.023 mm

Insert thickness E: 4 mm

for threads  $\geq$  M33

**Technical description**

for threads $\geq$	M33
Depth t	2.023 mm
Insert thickness E	4 mm
Insert geometry	Full profile, internal
External Ø D	23 mm

Number of clamping slots	3
Thread pitch	3.5 mm
Grade	HB7720
Tool material	Carbide
Thread type	MF
Thread type	M
Thread type	MF-LH
Thread type	M-LH
Flank angle	60 degrees
Type	01
Number of cutting edges Z	3
Cutting direction	right-hand and left-hand
Type of product	Cutter insert for circular milling