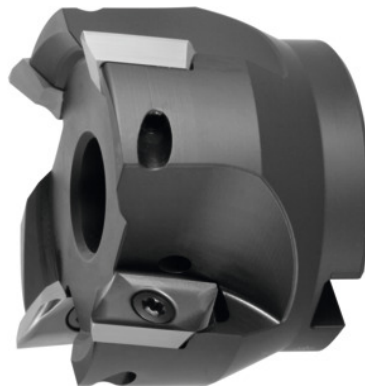


**Shoulder mill 90° 5720VZ16, with bore, Ø D / number of teeth Z: 40/3 mm****Order data**

Order number	220803 40/3
GTIN	2050002058255
Item class	28R

Description**Version:**

Milling body with plain shank, balanced to $G = 6.3$ at 30,000 rpm. Shell-type milling cutters and milling cutters with modular interfaces have to be balanced together with their holder before use in high-speed copy milling. The design allows all radii of indexable inserts up to $r_e=6.0\text{mm}$ to be mounted without modification to the milling head and without length correction.

Through-coolant: yes

maximum cutting depth $a_{p\text{ max}}$: 16 mm

Overall length L_{tot} : 45 mm

Mounting bore Ø: 16 mm

suitable indexable insert: ZD.. 16M5

Insert screw: 229900 (TP20; 6.0 Nm)

Technical description

Overall length L_{tot}	45 mm
maximum cutting depth $a_{p\text{ max}}$	16 mm
Insert screw	229900 (TP20; 6.0 Nm)
Mounting bore Ø	16 mm

Cutting edge Ø D _c	40 mm
suitable indexable insert	ZD.. 16M5
Number of cutting edges Z	3
Shank type	with bore
Setting angle κ	90 degrees
Milling application	Ramping
Milling application	End milling
Milling application	Circular milling
Through-coolant	yes
Type of product	Indexable insert cutter

Accessories

Clamping screw	229900
----------------	--------