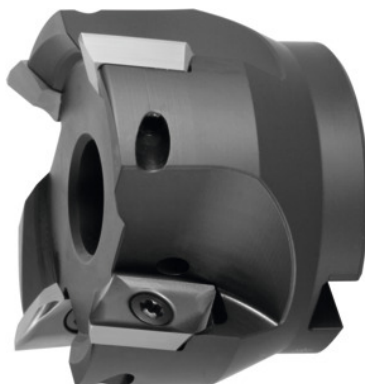


**Shoulder mill 90° 5720VZ16, with bore, Ø D / number of teeth Z: 63/4 mm****Order data**

Order number	220803 63/4
GTIN	2050002058293
Item class	28R

**Description****Version:**

Milling body with plain shank, balanced to  $G = 6.3$  at 30,000 rpm. Shell-type milling cutters and milling cutters with modular interfaces have to be balanced together with their holder before use in high-speed copy milling. The design allows all radii of indexable inserts up to  $r_e=6.0\text{mm}$  to be mounted without modification to the milling head and without length correction.

Through-coolant: yes

maximum cutting depth  $a_{p\text{max}}$ : 16 mm

Overall length  $L_{\text{tot}}$ : 45 mm

Mounting bore Ø: 22 mm

suitable indexable insert: ZD.. 16M5

Insert screw: 229900 (TP20; 6.0 Nm)

**Technical description**

Insert screw	229900 (TP20; 6.0 Nm)
Mounting bore Ø	22 mm
Overall length $L_{\text{tot}}$	45 mm
Cutting edge Ø $D_c$	63 mm

suitable indexable insert	ZD.. 16M5
maximum cutting depth $a_{p \max}$	16 mm
Number of cutting edges Z	4
Shank type	with bore
Setting angle $\kappa$	90 degrees
Milling application	Ramping
Milling application	End milling
Milling application	Circular milling
Through-coolant	yes
Type of product	Indexable insert cutter

---

## Accessories

Clamping screw	229900
----------------	--------