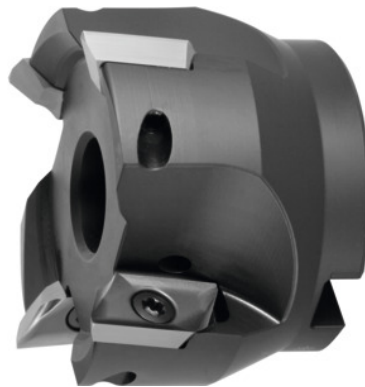




Shoulder mill 90° 5720VZ16, with bore, Ø D / number of teeth Z: 80/4 mm



Order data

Order number	220803 80/4
GTIN	2050002058316
Item class	28R

Description

Version:

Milling body with plain shank, balanced to $G = 6.3$ at 30,000 rpm. Shell-type milling cutters and milling cutters with modular interfaces have to be balanced together with their holder before use in high-speed copy milling. The design allows all radii of indexable inserts up to $r_e=6.0\text{mm}$ to be mounted without modification to the milling head and without length correction.

Through-coolant: yes

maximum cutting depth $a_{p,max}$: 16 mm

Overall length L_{tot} : 50 mm

Mounting bore \varnothing : 27 mm

suitable indexable insert: ZD.. 16M5

Insert screw: 229900 (TP20; 6.0 Nm)

Technical description

Mounting bore \varnothing	27 mm
Cutting edge $\varnothing D_c$	80 mm
maximum cutting depth $a_{p,max}$	16 mm
Insert screw	229900 (TP20; 6.0 Nm)

Overall length L_{tot}	50 mm
suitable indexable insert	ZD.. 16M5
Number of cutting edges Z	4
Shank type	with bore
Setting angle κ	90 degrees
Milling application	Ramping
Milling application	End milling
Milling application	Circular milling
Through-coolant	yes
Type of product	Indexable insert cutter

Accessories

Clamping screw	229900
----------------	--------