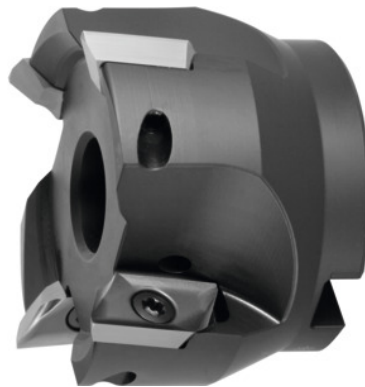




## Shoulder mill 90° 5720VZ16, with bore, Ø D / number of teeth Z: 80/5 mm



### Order data

Order number	220803 80/5
GTIN	4059782501713
Item class	28R

### Description

#### Version:

Milling body with plain shank, balanced to  $G = 6.3$  at 30,000 rpm. Shell-type milling cutters and milling cutters with modular interfaces have to be balanced together with their holder before use in high-speed copy milling. The design allows all radii of indexable inserts up to  $r_e=6.0\text{mm}$  to be mounted without modification to the milling head and without length correction.

Through-coolant: yes

maximum cutting depth  $a_{p,max}$ : 16 mm

Overall length  $L_{tot}$ : 50 mm

Mounting bore  $\varnothing$ : 27 mm

suitable indexable insert: ZD.. 16M5

Insert screw: 229900 (TP20; 6.0 Nm)

### Technical description

suitable indexable insert	ZD.. 16M5
Mounting bore $\varnothing$	27 mm
Overall length $L_{tot}$	50 mm
maximum cutting depth $a_{p,max}$	16 mm

Cutting edge $\varnothing D_c$	80 mm
Insert screw	229900 (TP20; 6.0 Nm)
Number of cutting edges Z	5
Shank type	with bore
Setting angle $\kappa$	90 degrees
Milling application	Ramping
Milling application	End milling
Milling application	Circular milling
Through-coolant	yes
Type of product	Indexable insert cutter

---

## Accessories

Clamping screw	229900
----------------	--------