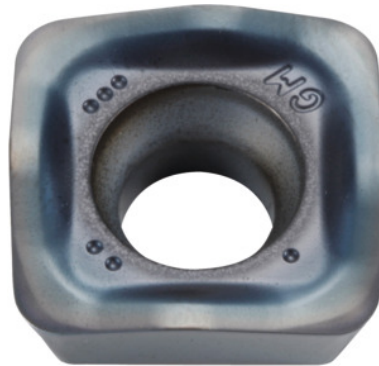



**SOMT....20ER-GM, PR1525, Type: 14**

**Order data**

Order number	222070 14
GTIN	4960664708178
Item class	25A

**Description**
**Version:**

4-edge indexable inserts with convex cutting edges for low cutting forces.

**Application:**

**FL geometry** is the first choice for general machining.

**Note:**

Standard application values for  $a_e = 0.3 \times D$ .

Corner radius: 2 mm

Programming radius at  $a_{p\max}$ : 3.5 mm

Feed  $f_z$  per tooth: 0.2 – 2 mm

**Technical description**

Feed $f_z$ per tooth	0.2 – 2 mm
Type	ST1400
Programming radius at $a_{p\max}$	3.5 mm
Corner radius	2 mm
ISO code indexable insert	SOMT....20ER-GM

Grade	PR1525
Tool material	Carbide
Number of changes/inserts	4
Type of product	Indexable insert for milling