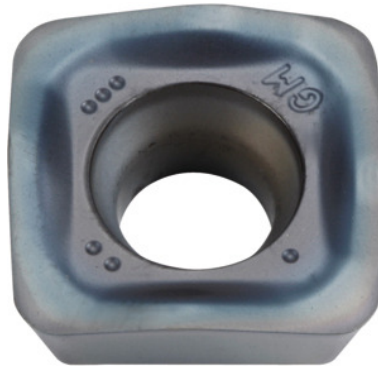



SOMT....20ER-GM, PR1510, Type: 14

Order data

Order number	222074 14
GTIN	4960664708116
Item class	25A

Description
Version:

4-edge indexable inserts with convex cutting edges for low cutting forces.

Application:

FL geometry is the first choice for general machining.

Note:

Standard application values for $a_e = 0.3 \times D$.

Corner radius: 2 mm

Programming radius at $a_{p\max}$: 3.5 mm

Feed f_z per tooth: 0.5 – 2 mm

Technical description

Feed f_z per tooth	0.5 – 2 mm
Type	GG
Programming radius at $a_{p\max}$	3.5 mm
Corner radius	2 mm
ISO code indexable insert	SOMT....20ER-GM

Grade	PR1510
Tool material	Carbide
Number of changes/inserts	4
Type of product	Indexable insert for milling