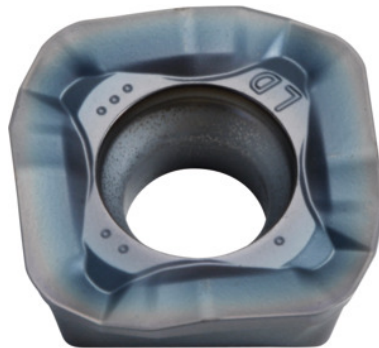



SOMT....20ER-LD, PR1525, Type: 14

Order data

Order number	222078 14
GTIN	4960664708185
Item class	25A

Description
Version:

4-edge indexable inserts with convex cutting edges for low cutting forces.

Application:

LD geometry is also suitable for high cutting depths ($a_{p\max} = 5$ mm) at moderate feed rates.

Do not use for helical, plunging or contour milling, or on steep walls.

Note:

Standard application values for $a_e = 0.3 \times D$.

Corner radius: 2 mm

Programming radius at $a_{p\max}$: 5 mm

Feed f_z per tooth: 0.03 – 2 mm

Technical description

Feed f_z per tooth	0.03 – 2 mm
Type	ST1400
Programming radius at $a_{p\max}$	5 mm
Corner radius	2 mm
ISO code indexable insert	SOMT....20ER-LD

Grade	PR1525
Tool material	Carbide
Number of changes/inserts	4
Type of product	Indexable insert for milling