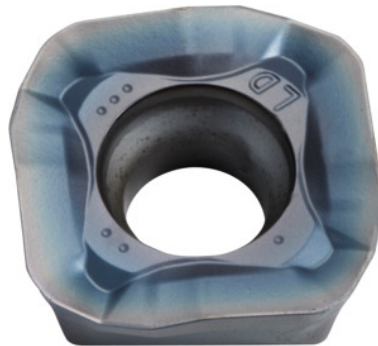



SOMT....20ER-LD, PR1535, Type: 14

Order data

| | |
|--------------|---------------|
| Order number | 222080 14 |
| GTIN | 4960664708246 |
| Item class | 25A |

Description
Version:

4-edge indexable inserts with convex cutting edges for low cutting forces.

Application:

LD geometry is also suitable for high cutting depths ($a_{p\max} = 5$ mm) at moderate feed rates. Do not use for helical, plunging or contour milling, or on steep walls.

Note:

Standard application values for $a_e = 0.3 \times D$.

Corner radius: 2 mm

Programming radius at $a_{p\max}$: 5 mm

Feed f_z per tooth: 0.06 – 1.8 mm

Technical description

| | |
|-----------------------------------|-----------------|
| Feed f_z per tooth | 0.06 – 1.8 mm |
| Type | INOX |
| Programming radius at $a_{p\max}$ | 5 mm |
| Corner radius | 2 mm |
| ISO code indexable insert | SOMT....20ER-LD |

| | |
|---------------------------|------------------------------|
| Grade | PR1535 |
| Tool material | Carbide |
| Number of changes/inserts | 4 |
| Type of product | Indexable insert for milling |