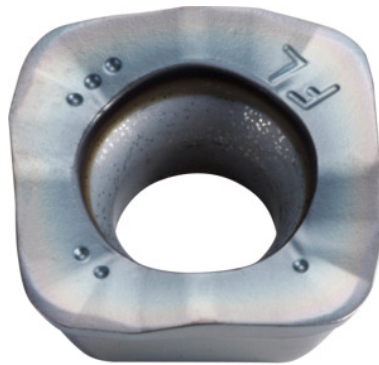



SOMT.....ER-FL, PR1525, Type: 14

Order data

Order number	222086 14
GTIN	4960664708161
Item class	25A

Description
Version:

4-edge indexable inserts with convex cutting edges for low cutting forces.

Application:

FL geometry (surface-oriented) is the first choice for roughing on lower-powered machines. Do not use for helical, plunging or contour milling, or on steep walls.

Note:

Standard application values for $a_e = 0.3 \times D$.

Corner radius: 1.4 mm

Programming radius at $a_{p\max}$: 3 mm

Feed f_z per tooth: 0.2 – 1.2 mm

Technical description

Feed f_z per tooth	0.2 – 1.2 mm
Type	ST1400
Programming radius at $a_{p\max}$	3 mm
Corner radius	1.4 mm
ISO code indexable insert	SOMT..... ER-FL

Grade	PR1525
Tool material	Carbide
Number of changes/inserts	4
Type of product	Indexable insert for milling