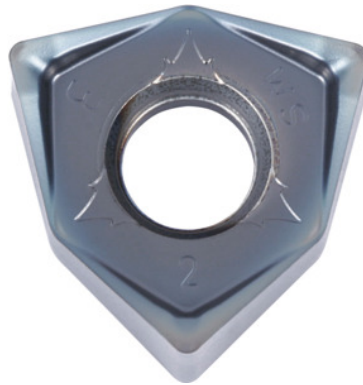



**WNMU 080608 EN-SM, PR1525, Type: INOX**

**Order data**

Order number	225623 INOX
GTIN	4960664648955
Item class	25A

**Description**
**Version:**

MEGACOAT-coated indexable inserts with **6 edges** – due to double-sided version. The high axial rake angle up to a maximum of 13° significantly reduces the cutting force.

**Application:**

The **SM geometry** has a highly positive rake and cuts smoothly.

**Note:**

Standard application values for  $a_e = 0.3 \times D$ .

Feed  $f_z$  per tooth: 0.06 – 0.2 mm

ISO code indexable insert: WNMU 080608 EN-SM

Corner radius: 0.8 mm

**Technical description**

Type	INOX
ISO code indexable insert	WNMU 080608 EN-SM
Corner radius	0.8 mm
Number of changes/inserts	6

Grade	PR1525
Tool material	Carbide
Feed $f_z$ per tooth	0.06 – 0.2 mm
Type of product	Indexable insert for milling