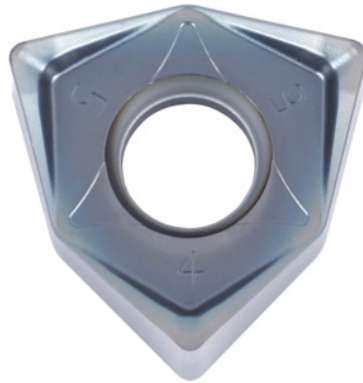



**WNEU 080608 EN-GL, PR1510, Type: GG**

**Order data**

Order number	225627 GG
GTIN	4960664648870
Item class	25A

**Description**
**Version:**

MEGACOAT-coated indexable inserts with **6 edges** – due to double-sided version. The high axial rake angle up to a maximum of 13° significantly reduces the cutting force.

Ground version for significantly better surface quality.

**Application:**

The **GL geometry** is suitable for good surface finishes thanks to the ground version and flat cutting edge.

**Note:**

Standard application values for  $a_e = 0.3 \times D$ .

Feed  $f_z$  per tooth: 0.06 – 0.2 mm

ISO code indexable insert: WNEU 080608 EN-GL

Corner radius: 0.8 mm

**Technical description**

Type	GG
ISO code indexable insert	WNEU 080608 EN-GL
Corner radius	0.8 mm

Number of changes/inserts	6
Grade	PR1510
Tool material	Carbide
Feed $f_z$ per tooth	0.06 – 0.2 mm
Type of product	Indexable insert for milling