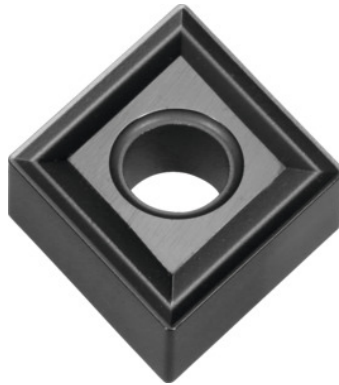



**CNMG 120408, Grade: CA4515**

**Order data**

|              |               |
|--------------|---------------|
| Order number | 250212 CA4515 |
| GTIN         | 4960664599974 |
| Item class   | 25E           |

**Description**

CNMG 120408 CA4515 Grade: CA4515  
 Chip breaker: STD  
 Cutting depth  $a_p$ : 0.5 - 7 mm  
 Feed  $f$ : 0.05 - 0.7 mm/rev.  
 Cutting speed  $v_c$  main application: 110 - 360 m/min

**Technical description**

|                                      |                      |
|--------------------------------------|----------------------|
| Cutting conditions                   | slightly interrupted |
| Cutting depth $a_p$                  | 0.5 - 7 mm           |
| Feed $f$                             | 0.05 - 0.7 mm/rev.   |
| Cutting speed $v_c$ main application | 110 - 360 m/min      |
| Main application                     | K                    |
| Chip breaker                         | STD                  |
| Corner radius                        | 0.8 mm               |
| Grade                                | CA4515               |

|                               |                              |
|-------------------------------|------------------------------|
| Finishing/roughing assignment | Semi-roughing                |
| Tool material                 | Carbide                      |
| ISO code indexable insert     | CNMG 120408                  |
| Number of changes/inserts     | 4                            |
| Type of product               | Indexable insert for turning |