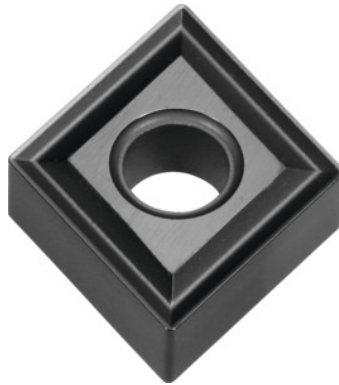



**CNMG 120412, Grade: CA4515**

**Order data**

Order number	250214 CA4515
GTIN	4960664599981
Item class	25E

**Description**

CNMG 120412 CA4515 Grade: CA4515  
 Chip breaker: STD  
 Cutting depth  $a_p$ : 0.5 - 7 mm  
 Feed  $f$ : 0.05 - 0.7 mm/rev.  
 Cutting speed  $v_c$  main application: 110 - 360 m/min

**Technical description**

Feed $f$	0.05 - 0.7 mm/rev.
Cutting speed $v_c$ main application	110 - 360 m/min
Cutting depth $a_p$	0.5 - 7 mm
Cutting conditions	slightly interrupted
Chip breaker	STD
Corner radius	1.2 mm
Main application	K
Grade	CA4515

Finishing/roughing assignment	Skrubbearbejdning-sletbearbejdning
Tool material	Carbide
ISO code indexable insert	CNMG 120412
Number of changes/inserts	4
Type of product	Indexable insert for turning