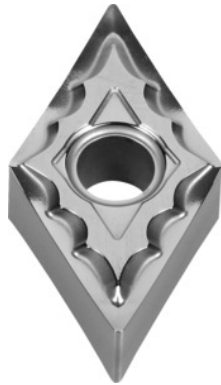



**DNMG 150608, Grade: KW10**

**Order data**

Order number	250797 KW10
GTIN	4960664224388
Item class	25E

**Description**

DNMG 150608 KW10 Grade: KW10

Chip breaker: AH

Cutting depth  $a_p$ : 0.8 - 3.5 mm

Feed  $f$ : 0.1 - 0.35 mm/rev.

Cutting speed  $v_c$  main application: 60 - 400 m/min

**Technical description**

Corner radius	0.8 mm
Cutting speed $v_c$ main application	60 - 400 m/min
Chip breaker	AH
Cutting conditions	slightly interrupted
Cutting depth $a_p$	0.8 - 3.5 mm
Feed $f$	0.1 - 0.35 mm/rev.
Main application	N
Grade	KW10

Finishing/roughing assignment	Semi-roughing
Tool material	Carbide
ISO code indexable insert	DNMG 150608
Number of changes/inserts	4
Type of product	Indexable insert for turning