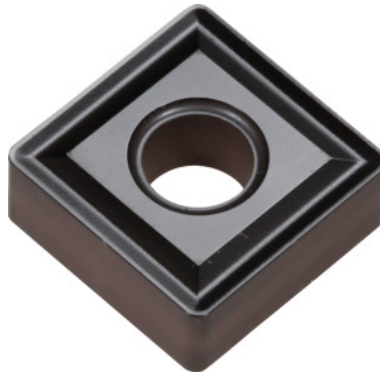



**SNMG 120408, Grade: CA4515**

**Order data**

Order number	251254 CA4515
GTIN	4960664600229
Item class	25E

**Description**

SNMG 120408 CA4515 Corner radius: 0.8 mm  
 Grade: CA4515  
 Chip breaker: STD  
 Cutting depth  $a_p$ : 0.5 - 5 mm  
 Feed  $f$ : 0.05 - 0.7 mm/rev.  
 Cutting speed  $v_c$  main application: 110 - 360 m/min

**Technical description**

Cutting conditions	slightly interrupted
Main application	K
Corner radius	0.8 mm
Chip breaker	STD
Feed $f$	0.05 - 0.7 mm/rev.
Cutting depth $a_p$	0.5 - 5 mm
Grade	CA4515

Cutting speed $v_c$ main application	110 - 360 m/min
Finishing/roughing assignment	Semi-roughing
Tool material	Carbide
ISO code indexable insert	SNMG 120408
Number of changes/inserts	8
Type of product	Indexable insert for turning