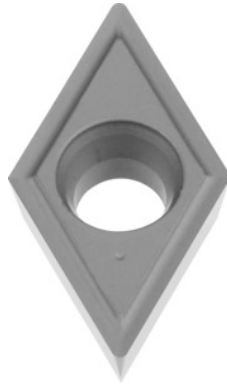



DOHT 070202 neutral, W79, Type: K10

Order data

Order number	268859 K10
GTIN	4047109037090
Item class	24T

Description

DOHT 070202 neutral K10 Grade: K10

Cutting depth a_p : 0.5 - 2.5 mm

Feed f : 0.05 - 0.25 mm/rev.

Cutting speed v_c main application: 200 m/min

Cutting speed v_c secondary application: 300 - 500 m/min

Technical description

Secondary application	N
Cutting speed v_c secondary application	300 - 500 m/min
Grade	K10
Cutting depth a_p	0.5 - 2.5 mm
Cutting speed v_c main application	200 m/min
Corner radius	0.2 mm
Main application	K
Cutting conditions	continuous

Feed f	0.05 - 0.25 mm/rev.
ISO code indexable insert	DOHT 070202
Number of changes/inserts	2
Product name attribute	W79
Rake	12 degrees
Type of product	Indexable insert for turning