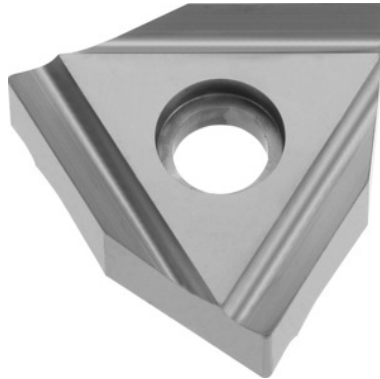



WNHX 100404 right-hand, W04, Type: P25

Order data

Order number	268891 P25
GTIN	4047109072749
Item class	24T

Description

WNHX 100404 right-hand P25 Grade: P25
 Cutting depth a_p : 0.5 - 1.5 mm
 Feed f : 0.05 - 0.25 mm/rev.
 Cutting speed v_c main application: 120 - 300 m/min
 Cutting speed v_c secondary application: 100 - 180 m/min

Technical description

Secondary application	M
Grade	P25
Cutting conditions	slightly interrupted
Cutting speed v_c main application	120 - 300 m/min
Corner radius	0.4 mm
Cutting speed v_c secondary application	100 - 180 m/min
Main application	P
Feed f	0.05 - 0.25 mm/rev.

Cutting depth a_p	0.5 - 1.5 mm
ISO code indexable insert	WNHX 100404 R
Number of changes/inserts	3
Product name attribute	W04
Rake	18 degrees
Type of product	Indexable insert for turning